

Triton™ 150 HC

High cooling efficiency, energy saving, and environmental friendliness are the features which characterize the new Triton150HC for use in the post mix area. The common refrigerant R134a used so far is replaced by the natural energy-efficient refrigerant HC (R290). This replacement protects the environment, saves energy and money through its increased cooling efficiency.

Key features

- Excellent build quality and highly efficient operation
- Special features designed to prolong the life time of the unit
- Small footprint
- All product coils are made of stainless steel
- Easy-care housing made of stainless steel
- Use of standardized parts
- Cold carbonation for a high carbonation volume
- Quick access to all service-relevant parts
- Large ice bank to cover dispensing peaks
- 3-pin ice bank probe ensures a perfect ice bank stability
- 3-pin level control with carbonator empty function

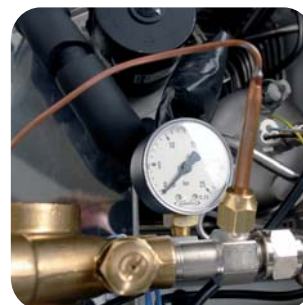
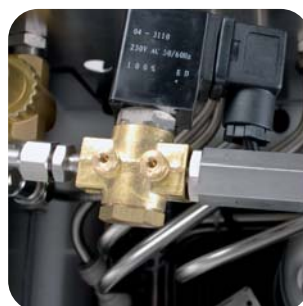
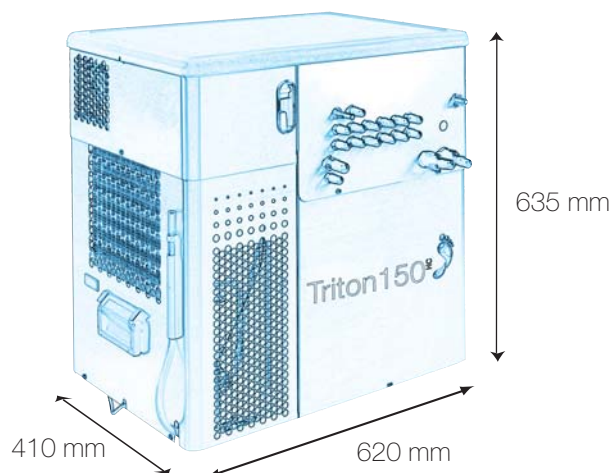
Key energy element



Natural environment friendly refrigerants (HC) R290



All information contained in this document is the property of Cornelius and should not be passed to any third party without prior written consent.



Maximum performance

Dispense capacity at rate of 2 Drinks a minute **

à 0,355 l each at 32°C	130 drinks
à 0,3 l each at 32°C	160 drinks
à 0,3 l each at 24°C	300 drinks

Refrigeration

Compressor power:	500 watt *
Ice bank weight:	11 kg
Initial pull down time (32°):	150 minutes
Ice bank capacity:	880 kcal
Evaporator type:	Stainless Steel
Condenser type:	Air cooled
Refrigerant:	R290

Pump Performance

Carbonation Pump:	280 l/h
Recirculation Pump:	120 l/h

Control type

Electronic ice bank and level control

Cooling Coils

Material:	Stainless Steel
Number of cooling coils:	9
Syrup:	6
Premix:	1
Still water:	1
Soda water:	1
Diameter:	7 and 10 mm
Connection:	Generally 1/2" BSF except still- and sodawater 5/8" UNF and water inlet

Maximum ambient temperature: 32 °C

Electrical

Supply voltage:	230V / 50 HZ
Power consumption:	950 watt (5,5A)
Supply:	2 m mains cable euro style plug

Dimensions

Height:	635 mm
Width:	620 mm
Depth:	410 mm

Weight

Dry weight:	53 kg
Dispatch weight:	58 kg

Variations and order numbers Triton150 HC

Soda Circuit	22 1000 795
--------------	-------------

* at -10°C evaporator temperature

** with 15 m Standard SC-Python



Cornelius reserves the right to modify the details in the publication as products and specifications are updated and improved. All data contained in this literature is correct at time of print. To ensure technical data is accurate please contact Cornelius prior to placing your order.

